



America's Poverty Fighting Network

# MinnCAP

MINNESOTA COMMUNITY ACTION PARTNERSHIP

# 2023 ANNUAL IMPACT REPORT



EMAIL

[info@minncap.org](mailto:info@minncap.org)

PHONE

**651-645-7425**

ADDRESS

**100 Empire  
Drive #202  
Saint Paul, MN  
55103**

# Table of Contents

→	01	Note from the Executive Director
→	02	Community Action Overview
→	03	Funding
→	04	Map of Minnesota CAP Agencies
→	05 - 06	Agency Services Chart
→	07 - 11	Programs, Services, and Statistics
→	12	Our Impact
→	13	Poverty Simulation
→	14	Political Advocacy
→	15	MinnCAP Leadership
→	16	Contact Information

# Note from the Executive Director



It has been my pleasure to serve as the Executive Director the past year with the Minnesota Community Action Partnership (MinnCAP). We continue to connect with Community Action Agencies and Tribal Nations across the state that provide essential services for people in need, assist communities to thrive and help build a better tomorrow. This report highlights our accomplishments. It tells a part of the story from the past year; the story of how our local Community Action Agencies have helped those in need.

MinnCAP is made up of member organizations in communities across Minnesota. Our members are Community Action Agencies (CAAs) that offer the last local line of defense for people in need. We also have MN's Office of Economic Opportunity as a pivotal partner in our mission. We are so proud of what we have accomplished this year; setting and meeting our goals, leading a bold and powerful legislative agenda with our partners that led to historic funding outcomes, the implementation of new powerful programs for our communities, and changing lives along the way. **We are grateful for the support and connections we've made and what we will continue to do together.**

We also know: there is still work to accomplish. As we continue on our path of social and economic justice for all, I hope you remain inspired, passionate and energized to fulfill the mission we have been called to do. Community Action Agencies invest in people and communities by responding to people's immediate and long-term needs. Their explicit goal is to help people move toward economic independence, growth, well-being and opportunity. I look forward to our future, and as always know our MinnCAP team is here to advocate, educate and collaborate with this outstanding network.

Yours in action,

**Lori  
Schultz**

Executive Director, CCAP  
Minnesota Community Action Partnership



# Community Action Overview



## Our Mission

**Minnesota Community Action Partnership (MinnCAP) strengthens the capacity of its member agencies to achieve their poverty-fighting missions, through influential advocacy, collaboration, and training.** In Minnesota, 24 Community Action Agencies and 11 Tribal Nations serve all 87 counties across the state, providing poverty solutions through various programs and services including: homeless prevention and housing assistance, utility bill assistance, healthcare enrollment, food and nutrition services, Head Start early childhood programming, financial asset building, regional transit, and more.

## Our Promise

Community Action changes people's lives, embodies the spirit of hope, improves communities, and makes America a better place to live. We care about the entire community, and we are dedicated to helping people help themselves and each other.

# Funding



## Community Services Block Grant (CSBG)

**\$8,975,289.22**

## Weatherization

**\$34,631,220.60**

## Low Income Home Energy Assistance Program

**\$71,330,267.79**

## Federal Head Start and Early Head Start

**\$109,478,622.97**

## Minnesota Community Action Grant

**\$4,240,804.65**

## State Head Start (Head Start and Early Head Start)

**\$28,924,465.98**

## Private Funding

**\$48,300,128.14**

## Local Funding

**\$18,133,145.92**

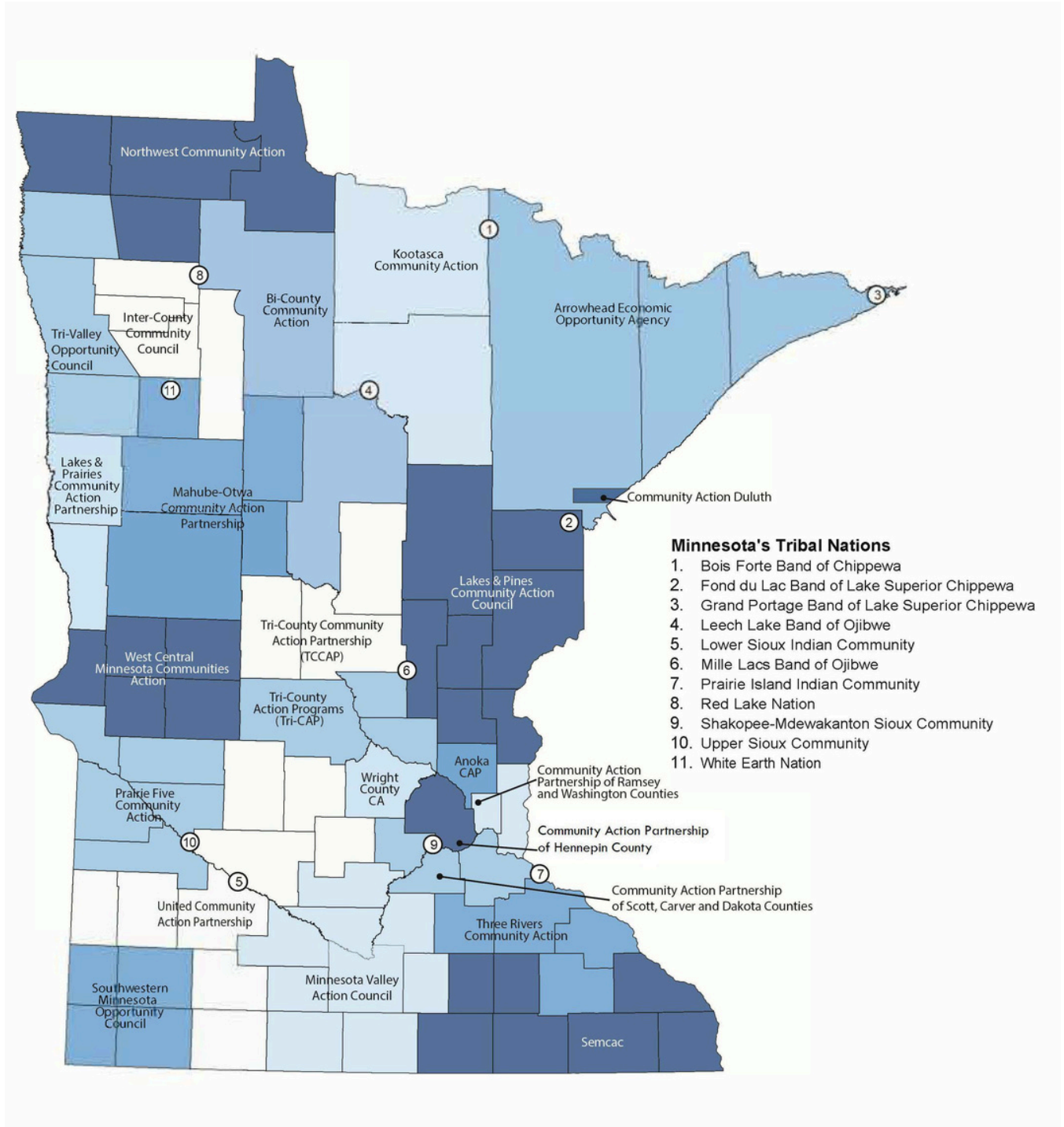
## Other State Resources

**\$2,315,054.27**

## Other Federal Resources

**\$645,231.93**

# Map of MN CAP Agencies



# Agency Services Chart

	Anoka County CAP	AEOA	Bi-County CAP	Duluth	CAP Ramsey & Washington	Scott Carver Dakota CAP	CAP Hennepin County	Inter-County	KOOTASCA	Lakes & Pines	CAP-LP	MAHUBE-OTWA	MVAC	Northwest	Prairie Five	Semcac	Southwestern	Three Rivers	Tri-County (TCCAP)	Tri-CAP	Tri-Valley	United CAP	West Central	Wright County	Bols Forte Tribe	Fond du Lac B&Gr	Gr& Portage Reservation	Leech Lake B&Gr	Lower Sioux Indian	Mille Lacs B&Gr	Prairie Isl& Indian	Red Lake	Upper Sioux	White Earth Reservation			
<b>EMPLOYMENT</b>																																					
Youth Employment			x				x				x	x									x					x	x		x	x		x	x				
Senior Employment Programs		x											x				x													x			x				
Displaced Homemakers		x																		x																	
Employment & Training Services	x	x	x	x		x	x		x	x		x					x				x	x				x				x			x				
Community Development	x		x					x	x		x	x		x	x		x	x		x	x	x	x			x			x	x	x	x					
Cottage Industries																										x											
<b>EDUCATION &amp; TRIANING</b>																																					
Literacy		x		x	x			x	x			x						x							x		x										
English/Second Language (ESL)		x																																			
GED, ABE, & Educational Services		x		x				x		x					x					x						x					x	x	x				
<b>INCOME MANAGEMENT</b>																																					
Financial Education	x	x		x	x		x	x	x	x	x	x	x	x	x	x		x	x	x	x	x	x	x	x	x	x	x	x	x	x	x	x	x	x		
Tax Preparation Assistance		x	x				x			x	x	x	x							x							x										
Asset Development & Savings Programs	x	x		x	x		x			x	x	x	x	x					x	x	x	x	x	x													
<b>HOUSING SERVICES</b>																																					
Weatherization		x	x		x			x	x	x		x	x	x	x	x		x	x	x	x	x	x	x	x	x	x	x	x	x	x	x	x	x			
Energy Related Repairs	x	x	x		x	x	x	x	x	x		x	x	x	x	x		x	x	x	x	x	x	x	x	x	x	x	x	x	x	x	x	x			
Energy Conservation Services	x	x	x		x	x		x	x	x		x	x	x	x	x		x	x	x	x	x	x	x			x										
Housing Grants & Loans		x					x	x	x					x	x	x	x				x	x	x	x			x	x									
Home Repair/Rehabilitation	x	x		x					x	x	x	x	x	x	x	x	x	x	x	x	x	x	x	x			x	x	x	x	x	x	x				
Small Cities Development Grants (SCDG)		x												x	x	x	x																				
Rental Housing Assistance		x	x				x	x	x	x	x	x	x	x	x	x		x									x	x									
Community Homeownership Education	x	x		x				x	x	x	x																										
Low-Income Housing Development	x	x						x	x	x		x															x	x	x	x							
<b>EMERGENCY SERVICES</b>																																					
Energy Assistance (EAP)	x	x	x		x	x	x	x	x	x		x	x	x	x	x		x	x	x	x	x	x	x	x	x	x	x	x	x	x	x	x	x			
Energy Crisis	x	x	x		x	x	x	x	x	x		x	x	x	x	x		x	x	x	x	x	x	x	x	x	x	x	x	x	x	x	x	x			
Fuel Fund	x	x					x	x	x	x		x	x	x	x					x	x	x	x	x			x	x									
Homeless Assistance		x	x				x	x	x	x		x	x	x	x					x	x	x	x	x			x										
Transitional Housing		x	x				x	x	x	x		x	x	x	x					x	x	x	x	x													
Emergency Family Services	x	x	x				x	x	x	x		x	x	x	x					x	x	x	x	x			x	x	x	x	x	x	x	x			
Abuse & Neglect Services																																					
Providing Donated Articles		x		x			x	x	x	x		x	x	x	x																						
Crisis Intervention	x	x					x	x		x	x																										
<b>NUTRITION</b>																																					
Holiday Projects			x				x						x		x	x									x	x		x	x	x	x						
Women, Infants, Children (WIC)																											x										
Gardening				x																																	
Home Delivered Meals		x					x																				x	x	x	x	x	x	x	x	x	x	
Congregate Meals		x					x																														
USDA Commodity Assistance																																					
SNAP Nutrition Outreach		x	x	x					x	x	x	x	x	x	x	x																					
Food Assistance (e.g. Food Shelf)		x					x																														

# Agency Services Chart

	Anoka County CAP	AEOA	Bi-County CAP	Duluth	CAP Ramsey & Washington	Scott Carver Dakota CAP	CAP Hennepin County	Inter-County	KOOTASCA	Lakes & Pines	CAP-LP	MAHUBE-OTWA	MVAC	Northwest	Prairie Five	Semmac	Southwestern	Three Rivers	Tri-County (TCCAP)	Tri-CAP	Tri-Valley	United CAP	West Central	Wright County	Bols Forte Tribe	Fond du Lac B&G	Gr& Portage Reservation	Leech Lake B&G	Lower Sioux Indian	Mille Lacs B&G	Prairie Isl& Indian	Red Lake	Upper Sioux	White Earth Reservation		
<b>LINKAGES</b>																																				
Transportation System	x	x							x	x	x				x	x	x	x	x	x	x	x	x			x		x				x	x			
Transportation Assistance		x	x	x	x		x	x	x	x	x				x	x	x	x	x	x	x	x	x	x				x	x	x	x	x	x	x		
Vehicle Program				x	x		x	x					x	x				x	x	x			x													
Transportation Safety Programs												x											x													
Senior Oriented Services	x	x								x	x	x		x	x	x	x	x				x				x		x	x	x	x	x	x	x		
Chore Services	x					x						x						x	x					x												
Senior Volunteer Program		x										x												x												
Senior Companion program	x																					x		x	x	x	x	x	x	x	x	x	x	x		
Information & Referral	x	x	x	x	x	x	x	x	x	x	x	x	x	x	x	x	x	x	x	x	x	x	x	x		x		x	x	x	x	x	x	x		
Outreach	x	x	x	x	x	x	x	x	x	x	x	x	x	x	x	x	x	x	x	x	x	x	x	x		x		x	x	x	x	x	x	x		
Public Education & Advocacy	x	x	x	x	x	x	x	x	x	x	x	x	x	x	x	x	x	x	x	x	x	x	x	x		x		x	x	x	x	x	x	x		
Benefit Enrollment Assistance		x	x	x	x	x	x	x	x	x	x	x	x	x	x	x	x	x	x	x	x	x	x	x		x		x	x	x	x	x	x	x		
Leadership Development for clients	x	x	x	x	x	x		x	x	x	x	x	x	x				x																		
<b>SELF SUFFICIENCY</b>																																				
Head Start	x	x	x		x	x		x	x	x	x	x	x	x	x	x	x	x	x	x	x	x	x	x		x		x	x	x	x	x	x	x		
Early Childhood Care & Education	x	x	x		x	x		x	x	x	x	x	x	x	x	x	x	x	x	x	x	x	x	x		x		x	x	x	x	x	x	x		
Child Care Administration										x	x				x	x	x																			
At Risk Youth Programming		x	x			x		x	x		x	x		x												x		x	x	x	x	x	x	x	x	
Campership Youth Program																																				
Child Care Resource Referral	x										x	x			x		x					x	x	x	x		x			x	x		x	x		
Youth Recreation																											x		x	x	x	x	x	x	x	
Parenting resources	x	x	x			x		x	x	x	x	x	x	x	x	x	x	x	x	x	x	x	x	x		x			x	x	x	x	x	x	x	
Fatherhood Initiative	x									x					x	x	x								x		x									
Crisis Nursery							x																													
Self Sufficiency	x	x	x			x	x	x	x	x	x	x		x	x	x		x								x										
Family Loan Fund																																				
<b>HEALTH SERVICES</b>																																				
Health Care Aid (Non-Financial )				x	x	x			x	x	x		x		x					x		x					x								x	
Health Care Aid (Financial)					x																															
Family Planning																																				





# Programs, Services, and Statistics



## Programs and Services

Local Community Action Agencies offer custom programs to meet the unique needs of their communities, but they do share common goals. The programs offered help and encourage children and youth development, support people experiencing poverty, provide aid in times of crisis, sustain and honor senior citizens and people with disabilities, and strengthen families and communities. Learn how our programs impact our clients directly through our client stories. Additional program information available: [minncap.org](http://minncap.org)



## Assistance and Services

Community Action's goal is to provide communities with low incomes with the resources they need to build resilience and move out of poverty. CAAs work closely with program participants and partner organizations to mitigate familial and financial crises and ensure they can remain safely housed.

- **4,914 people** received emergency clothing assistance
- **4,804 people** received emergency hygiene kits
- **Over 655,000 people** received transportation assistance
- **101 people** opened a savings account
- **282 people** increased their savings, and 210 increased their net worth
- **29,784 seniors** maintained an independent living situation

*Behind every statistic lies a story, a journey, and a human face. Numbers may tell part of the tale, but it's the individuals, families, and communities that bring these statistics to life. Together, let's go beyond the data, delve into the narratives, and work tirelessly to create positive change where it's needed most.*



## Housing

In 2023, we served 160,912 households.

- **1,409 people** experiencing homelessness received safe, temporary housing
- **4,930 households** avoided eviction and 201 avoided foreclosure
- **5,507 people** obtained safe and affordable housing, and **2,316 people** maintained their safe housing for **at least 180 days**
- **3,685 people** experienced improved health and safety in their home



## Energy Efficiency

Families with low incomes pay a disproportionate amount of their finances on energy compared to their neighbors with middle and upper incomes, and **1 in 5 households** in the U.S. forego paying for food and medical bills to pay their utility bills. **Minnesota Community Action Agencies and Tribal Nations work to ensure Minnesotans with low incomes are able to maintain their utilities and lower their energy costs.** These programs are funded mainly by the United States Department of Health and Human Services, the U.S. Dept. of Energy, and the MN Dept. of Commerce.

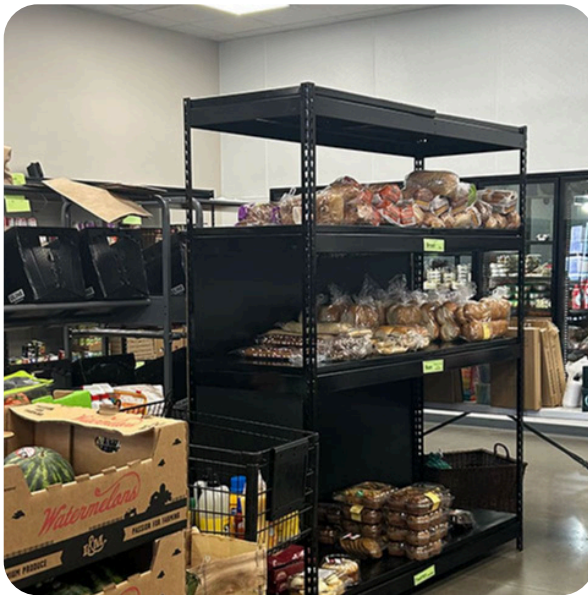
- **5,758 households** improved energy efficiency/energy burden reduction in their homes
- **198,659 households** received utility assistance
- **39,676 households** received utility arrearage assistance

## Early Education and Head Start

Head Start programs promote school readiness of children ages birth to five from families with low incomes by supporting the development of the whole child. Since Head Start's beginnings over 50 years ago, it has shown a significant impact not only on educational achievement but also on long-term health and well-being: increasing homeownership, reduction in substance use and dependency, reduction in likelihood to go to prison, and so much more. Early childhood education also allows parents to work during the day while their children are safely learning outside the home. Although the holistic benefits of childcare are well documented, access to affordable childcare for many families with low incomes is out of reach. **Community Action Agencies work to improve access through Head Start and Early Head Start programs and work to increase the number and affordability of various childcare provider options across the state.**

- **Over 7,700 children 0-5 years of age demonstrated skills for school readiness**
- **8,768 children were enrolled in Early Head Start and Head Start**
- **Over 7,717 parents improved their skills related to their role as a parent/caregiver**
- **Over 3,395 people received childcare payments and subsidies**





## Food and Nutrition

**One in eight Minnesotans and almost 15 percent of MN children experience food insecurity each year.** They lack adequate access to food for sustained periods, resulting in either restrictive diets and skipped meals or being forced into purchasing cheaper, less healthy foods. Households with low incomes are more likely to pay a higher percentage of their incomes on rent and utilities, leaving less money for food. **Community Action Agencies work to increase food security among the most vulnerable.** These food programs, funded by MN Dept. of Human Services and U.S. Dept. of Agriculture, are provided by CAAs, Tribal Nations and partner organizations.

- **Over 67,000 people** received food distribution from their Community Action Agency
- **Over 18,892 people** were assisted in enrolling in the Supplemental Nutrition and Assistance Program (SNAP)

# Our Impact



## Health and Well-Being

- **Over 10,000** people demonstrated improved physical health and well-being, and 3,665 people showed improved mental and behavioral health and well-being
- **7,035 people** received their immunizations and 6,700 had health screenings
- **2,784 households** obtained health insurance benefits

## Employment

- **1,723 adults**, who were unemployed, obtained employment up to a living wage, and an **additional 183 adults** who had been unemployed, obtained employment with a living wage or higher
- Job training services: **3,990 people** received career/job coaching and readiness training

## People Served

	2022		2023		
INDIVIDUALS	371,000	→	423,897	→	14.25% INCREASE
HOUSEHOLDS	151,000	→	160,912	→	2.5% INCREASE

# Rethink Poverty: A Poverty Simulation

**The Community Action Poverty Simulation breaks down stereotypes by allowing participants to step into the real-life situations of others.**

Poverty is often portrayed as a stand-alone issue, but this simulation allows individuals to walk a month in the shoes of someone who is facing poverty and to realize how complex and interconnected issues of poverty really are.



**2023 Poverty Simulation**

## Our Services

Experience the Community Action Poverty Simulation! Step into the lives of 26 families facing challenges. Each family gets a unique information packet about the challenges they're facing. They then go on to navigate four 15-minute "weeks" to secure essentials using community resources. Volunteers portray resource providers throughout the communities. The 3-hour activity includes an introduction, simulation, and guided debrief. Join us for a meaningful exploration of poverty's realities. Join us for a meaningful exploration of poverty's realities by hosting a poverty simulation in your area. To schedule a poverty simulation contact MinnCAP staff at [info@minncap.org](mailto:info@minncap.org)

**"I had no idea how under-educated I was on this subject."**

*—Poverty Simulation Participant*

## Our Focus

The Community Action Poverty Simulation is a tool that helps participants rethink the challenges that millions of individuals with low income must face each and every day. More importantly, this tool helps people identify areas of change that can directly impact the effects of poverty on individuals, families and communities.

# Political Advocacy

MinnCAP advocates at the state and federal level for policies that help build community resiliency, address the causes of poverty, and enhance financial stability. We advocate for flexible grant funds that allow local agencies to meet the varied needs of their communities. We often work in coalitions with allies and partner organizations to leverage additional resources. We look to our Grassroots Advocacy Network—including staff, volunteers, allies, coalition members, and partner organizations working to eliminate poverty—to connect with state and federal elected officials.



For our 2023 Legislative Agenda and 2023 Legislative Outcomes, visit our website with the QR code:

SCAN  
ME





# MinnCAP Leadership

MinnCAP's Board of Directors is comprised of the Leaders from each of the local Community Action Agencies across MN and a Minnesota Head Start Association (MHSA) representative.

## Board of Directors Leadership

- Lori Schwartz, **CCAP, Lakes & Prairies Community Action Partnership (CAPLP) (CCAP)**, *Board Chair*
- Amanda Mackie, **Minnesota Valley Action Council (MVAC)**, *Board Vice-Chair*
- Debi Brandt, **United Community Action Partnership (UCAP)**, *Board Secretary*
- Teresa Carter, **CCAP, Tri-County Community Action Partnership (TCC ACTION)**, *Board Treasurer*

## Board of Directors Members

- Scott Zahorik, **Arrowhead Economic Opportunity Agency (AEOA)**
- Patrick McFarland, **CCAP, Anoka County Community Action Program (ACCAP)**
- Barb Moran, **CCAP, BI-County Community Action Programs (BI-CAP)**
- Kendra Krolik, **Community Action Partnership of Hennepin County**
- Sonia Gass, **Community Action Partnership of Ramsey & Washington Counties**
- Sandy Simar, **Families First of Minnesota, MNHSA representative**
- Catherine Johnson, **Inter-County Community Council (ICCC)**
- Maureen Rosato, **KOOTASCA Community Action**
- Denise Stewart, **CCAP, Lakes and Pines Community Action Council**
- Liz Kuoppala, **CCAP, MAHUBE-OTWA Community Action Partnership**
- Sharon Millner, **CCAP, Northwest Community Action**
- Deb Larson, **Prairie Five Community Action Council**
- Jeff Hansen, **Community Action Partnership of Scott Carver and Dakota Counties**
- Jennifer Hengel, **Semcac**
- Darci Goedtke, **Southwestern Minnesota Opportunity Council (SMOC)**
- Jenny Larson, **CCAP, Three Rivers Community Action**
- Colleen Orne, **Tri-County Action Program (Tri-CAP)**
- Jason Carlson, **Tri-Valley Opportunity Council**
- Missy Becker-Cook, **CCAP, West Central Minnesota Communities Action**
- Carrie Tripp, **CCAP, Wright County Community Action (WCCA)**

# Contact Information

Phone

651-645-7425

Email

info@minncap.org

Website

minncap.org

Address

100 Empire Drive, Suite 202  
St. Paul, MN 55103

Facebook and  
Instagram

facebook.com/minncap  
instagram.com/minncap

LinkedIn  
X (formerly  
Twitter)

linkedin.com/minncap  
x.com/minncap

